

EMERGENCY BOXES

Box Bassa Tensione 24 HP

Adatto per motori fino a 24HP 18Kw 38A trifase 400 volt

Funzioni: avviamento per motori trifase/monofase, start/stop controllato da pulsanti a membrana, completa di pulsante d'emergenza.

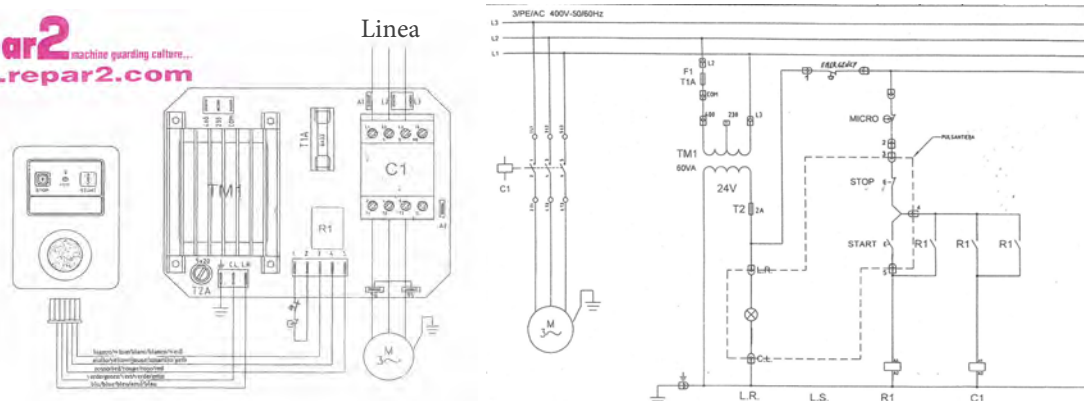
Caratteristiche : pulsantiera separata in scatola impermeabile completa di staffe di fissaggio. Contenitore separato in plastica completo di trasformatore e teleruttori per trasformare la corrente dei comandi in bassa tensione (24V), predisposta per la gestione dei microinterruttori installati

Dimensioni : 170 x 118 x H82 mm (pulsantiera) 200 x 150 x H150 mm (contenitore componenti elettrici)

TL/10HP/PST1V




Repar2 machine guarding culture...
www.repar2.com



Utilization categories

Alternate current: AC15 (50...60 Hz)
 Ue (V) 230
 Ie (A) 3
 Direct current: DC13 (6 operations/minute)
 Ue (V) 24
 Ie (A) 5

Markings, quality marks and certificates:

CE 
 Approval UL: E1317B7

Complying with the requirements requested by:
 Low Voltage Directive 2006/95/EC,
 Machinery Directive 2006/42/EC,
 Electromagnetic Compatibility 2004/108/EC

Livello di affidabilità di sicurezza

B10d = 20000000 cicli contattore con micro secondo EN/ISO 13849-1

B10d = 1369863 cicli contattore con carico nominale secondo EN/ISO 13849-1

Durata meccanica: 15 Mcicli

Funzionamento: 3600 cyc/h at <= 60 °C

Tempo di operatività: 4.1119 ms opening 12.1122 ms chiusura

Code : BT-BOX 24 HP



Via Ambrogio Colombo, 176 - 21055 Gorla Minore (VA) Italy
 Tel. +39 0331 465727 Fax: +39 0331 465728
 www.repar2.com info@repar2.com
 Exp.Dept: exportoffice@repar2.com

EMERGENCY BOXES

Low Voltage Box 24 HP

Suitable for motors up to 24HP 18Kw 38A 400 volt triphase

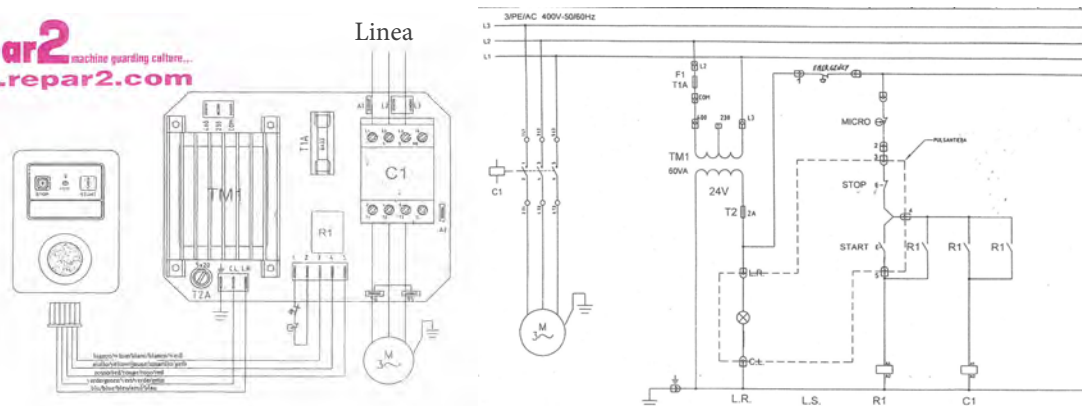
Functions: Triphase motor start/stop with overload cut-out and automatic reset by push button switches or emergency

Features : Separate push buttons box, spare fuse inside box, warning light. Low tension (24V) command functions, management of safety microswitches installed on the machine button

Dimensions : 170 x 118 x H82 mm (push buttons panel)
200 x 150 x H150 mm (electric box)
TL/10HP/PST1V



Repar2 machine guarding culture...
www.repar2.com



Utilization categories
 Alternate current: AC15 (50...60 Hz)
 Ue (V) 230
 Ie (A) 3
 Direct current: DC13 (6 operations/minute)
 Ue (V) 24
 Ie (A) 5

Markings, quality marks and certificates:
 CE cULus
 Approval UL: E1317B7

Complying with the requirements requested by:
 Low Voltage Directive 2006/95/EC,
 Machinery Directive 2006/42/EC,
 Electromagnetic Compatibility 2004/108/EC

Safety reliability level:

B10d = 20000000 cycles contactor with mechanical load conforming to EN/ISO 13849-1

B10d = 1369863 cycles contactor with nominal load conforming to EN/ISO 13849-1

Mechanical durability: 15 Mcycles

Operating rate: 3600 cyc/h at ≤ 60 °B

Operating time: 4.1119 ms opening 12.1122 ms closing

Code : BT-BOX 24HP



Via Ambrogio Colombo, 176 - 21055 Gorla Minore (VA) Italy
 Tel. +39 0331 465727 Fax: +39 0331 465728
www.repar2.com info@repar2.com
 Exp.Dept: exportoffice@repar2.com